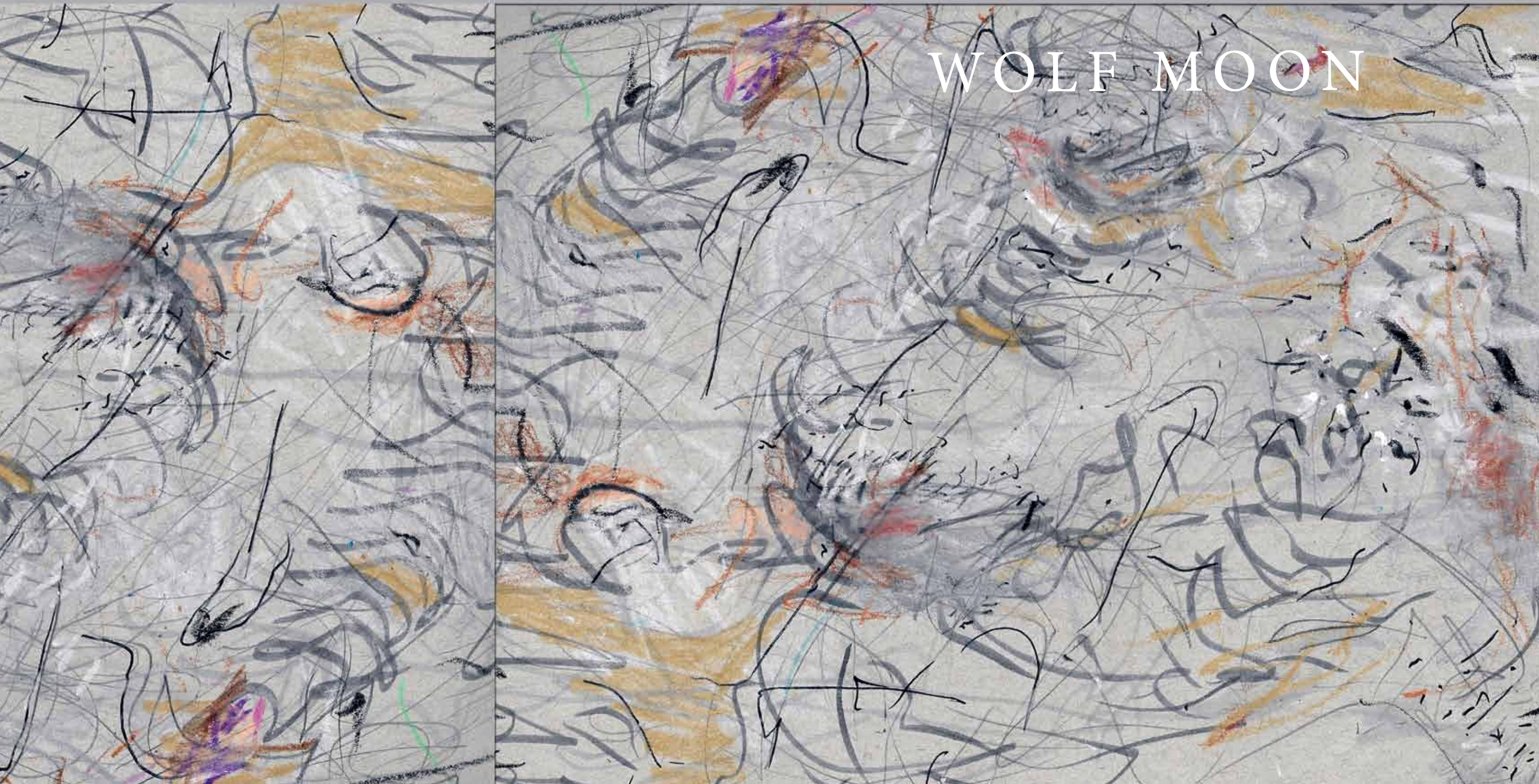


# Lunar Mythologies

Manual for Observers of the

# WOLF MOON







# Lunar Mythologies

## Manual for Observers of the **WOLF MOON**

Part 1 of 12











This Manual for Observers of the Wolf Moon serves as a guide for the creation of future Wolf Moon ceremonies. It also bears witness to a particular Wolf Moon gathering on January 20, 2019 in Harlem, New York. It will unfold in parts for contemplation and practice. This manual is part 1 of the 12 part Lunar Mythologies, a companion for the observation of the Full Moon throughout the year.

# Preparations & Considerations

Collectively aligning our focus with natural cycles and with the Wolf Moon's unique symbolism heightens intuitive awareness and creates clarity. A full moon marks a time when intuitive abilities are at their peak, as are feelings and emotions. The Wolf Moon signifies a time to listen to our instinctual natures and meditate on loyalty. We are called to consider the wolf's relationship to ritual and to elaborate expression as modes of mutualism and protection.

Collective purpose channels energy. Gather 9-12 people and invite them to sit in a circle on the ground.

The terrain for practice is formed through three main elements: the post truth invocation of reality, which forms the meeting ground for consensus and non-consensus reality; the Wolf directs us towards concepts which we introduce and define; finally, the common notions, which underly our ability to perform the exercises.

Select (or write) and memorize two statements which elaborate the Wolf Moon themes. In this case:

"... The howling of wolves ... [is a portion] of eternity too great for the eye of man." - William Blake

"We will not remember the words of our enemies, but the silence of our friends." - Dr. Martin Luther King Jr.

These will be given for translation during the ceremony. In the first translation exercise, the first statement is spoken aloud to the person on your left. That participant repeats the line to the person on her left as faithfully as possible, but without interruption even if faithfulness is not achieved. This process continues around the circle, for 3 or 9 circuits, ending with the person to your right. Record the final, resultant iteration. The exercise is repeated with the second statement, only the statement is now whispered from one participant to the next. The result is, again, recorded.

Select a bloodstone, or other object to serve as the vessel for an energetic charge for psychometric processing. Charge it with a thought emblematic of the Wolf Moon for a minimum of 3 nights prior to the ceremony. Bloodstone is used traditionally to enhance intuitive capacity and is unique in its ability to balance that sense of receptivity with being grounded. This grounding relates to balancing the root chakra, when balanced this activates a secure foundation through basic elements of shelter, food, and sex. The charging of the stone can be achieved by holding it and meditating on the chosen concept. Then, write the concept word on a piece of paper and wrap the stone. Place the wrapped stone on a windowsill until the time of the full moon ceremony. During the ceremony, unwrap the bloodstone and hold it while silently contemplating the charge. When ready, hand it to the participant on the left. Each participant will hold the

bloodstone until she comes to an intuition, be it sound, image, or concept. At that point, she will pass the bloodstone to her left until each participant has held the stone. Once the bloodstone has passed through the circle, each participant will share her intuition. Each one will be recorded. Finally, the original charge will be revealed. Now is an optimal time for each participant to elaborate on their image or intuition and to discover themes and relationships within the group and to the symbolism of the Wolf Moon.

Give each participant a sheet of paper and a drawing implement; it makes it easier to draw if each person has a clipboard on which to draw as well. Mark one sheet of paper in some way to indicate the end of a rotation around the circle, for example, tie a ribbon on one clipboard. Each participant will draw for 1 minute and then pass the paper to her left. Each participant will draw for another minute on the drawing now in her possession. This process continues until one cycle is completed, (when the paper with the indication returns to its original scribe). This process can be repeated 1, 3, 6, or 9 times, the images becoming successively more detailed. Collect all drawings.

In closing, create time for communal reflections and observations. Select a reading and/or recording to bring the ritual to an end.

The reporting process results in the compilation of the information generated into the Wolf Moon Manual. The manual should also serve as a guide for future ceremonies, in this way, it is self-generating. All manuals becoming part of the perpetually expanding, Lunar Mythologies.

Sign with peace.

*The Manual for Observers of the Wolf Moon* is now complete.



# WOLF MOON

January 2019, Harlem, NY

## PROGRAM

Introduction 1 minute

Post Truth Invocation of Reality 9 minutes

Definitions: 3 minutes

Wolf  
Ritual  
Loyalty  
Faith  
Instinct

Common Notions 1 minute

Propositions: 45 minutes

Meditation  
Verbal Translation  
Whispered Translation

Psychometric Processing

Collaborative Automatic Drawing

Closing: 5 minutes

Reading  
Video

## POST TRUTH INVOCATION OF REALITY

*August 2016, 2 years and 5 months ago: Lunar Eclipse in Aquarius*

New discoveries and relationships will send you on a special mission to find plans for a brighter future.

*August 2016, 2 years and 5 months ago: Lunar Eclipse in Aquarius*

Through darkened space I headed towards glowing light. People worked keeping the fire alive, the floor was concrete and the expanse of space seemingly limitless. The fire's glow could not illuminate the outer reaches of sight, perhaps that was because we were outside. Perhaps in the woods. This fire was contained in an anagama the size of a long hut. The anagama is an ancient type of single chamber pottery kiln. The single chamber, built in a sloping tunnel shape, means there is no separation between the pottery and the firebox. A continuous supply of firewood is thrown into the hot kiln and consumed very rapidly. Stoking occurs around the clock. The process produces fly ash. It produces volatile salts. Wood ash settles on the pieces during the firing, and the complex interaction between flame, ash, and the minerals of the clay body forms a natural ash glaze. This shows a great variation in color, texture, and thickness, ranging from smooth and glossy to rough and sharp.

Pieces closer to the firebox may receive heavy coats of ash, or even be immersed in embers, while others deeper in the kiln may only be softly touched by ash effects. The way pieces are placed near each other affects the flame path. The appearance of pieces within localized zones of the kiln can vary as well, taking on similarities based on region.

The potter must imagine the flame path as it rushes through the kiln, and use this sense to paint the pieces with fire.

The length of the firing may take anywhere from 48 hours to 12 or more days. The kiln takes the same amount of time to cool down. Records of historic firings in large kilns shared by several village potters describe several weeks of steady stoking per firing.

A lot can go wrong. Potters work for months, leaving their pieces to wait, in precarious fragility, for the en masse, communal firing. A bit of residual moisture or a slight aberrance in arrangement could create an explosion with reverberations throughout the kiln. Months of work could be lost. Livelihood can depend on a single firing.

I could see people tending this fire. They threw huge rolls of cotton batting on top of the wood. I worked with textiles, not ceramics, so I could recognize this type of fuel. Although in my work, it was generally used as insulation, layered between other pieces of stitched fabric. Then



the people themselves started falling into the fire. I saw them go in, they were perhaps friends of mine. And maybe they went in, in so far as they were my friends. I imagined the flame path rushing the kiln, and could see who would become beautiful and who would perish.

*August 2016, 2 years and 5 months ago: Lunar Eclipse in Aquarius:*

After 95 years, my grandmother, Mary, died.

*August 2016, 2 years and 5 months ago: Lunar Eclipse in Aquarius:*

I invited women, friends, into my home, an old one room schoolhouse in rural Maine, for an event called Chatter. They would tell their stories, perform their idiosyncracies.

Chatter describes women's speech as rapid and not very articulate, comparing the sounds and content with the noise produced by magpies, which is importunate and annoying.

Chatter is a signals intelligence term, referring to the quantity of intercepted communications. Intelligence officials, monitor the quantity of communication, to or from suspected parties such as terrorists or spies, to determine whether there is cause for alarm. Because chatter is a measure of collective behavior, it tends to be a fairly dependable indicator.

*August 2016, 2 years and 5 months ago: Lunar Eclipse in Aquarius:*

Someone I once believed to be my friend and someone I once believed to be my husband slept together. I left Maine for New York City and did not return until . . .

*August 2017, one year and 5 months ago, Lunar Eclipse in Aquarius:*

I drive to Maine from New York City with other artists' work. Paintings and banners and razor blades and books and photographs and a so-called honeypot bound for an exhibition called Address, as in, to speak to a group. These works Address the townspeople, because chatter is a measure of collective behavior. These works read as follows:

Shame on You Monsters

Dad's Balls are Dad's Business

Letting Go

Looky Look

Dust that Hides

Since Evil is a Substance, Space is a Problem

The Past is a Wilderness of Horrors, Ditto for the Future

This Is Pompeii



*January 2019, Present Time, Lunar Eclipse in Leo:*

The final Leo eclipse in a series that's been striking the Leo-Aquarius axis since August 2016. In fact, the stunning Leo total solar eclipse of August 2017 was part of this same lunar thread. Stories and situations that have been developing since then could hit a surprising arc this January.

The Leo-Aquarius eclipse series is the axis of individual truth vs. collective.

*January 2019, Present Time, Lunar Eclipse in Leo:*

White, Catholic, teenage boys mock Omaha elder and Vietnam veteran.

*January 2019, Present Time, Lunar Eclipse in Leo:*

My ex-husband's first girlfriend, the one he left for me 24 years ago, was involuntarily committed to the behavioral health ward of a New York City hospital, I'm trying to get her out. Today is her birthday. Other patients slip me notes with their names scribbled down, "Please call someone to help me, too," they whisper.

*January 2019, Present Time, Lunar Eclipse in Leo:*

I awaken in the sunshine behind a low stone wall and look out over a vast green field, grass short and dense. Grazing sheep in the distance, brown hills rising behind them. I marvel at not having realized what a beautiful home I've always inhabited. I took pictures with my phone, but they disappeared. The field and sheep and light remained, material and well.

### DEFINITIONS:

Wolves live, travel and hunt in packs averaging 7 to 8 animals, with records of up to 30. Packs include the mother and father wolves, their pups and older offspring. Wolves develop strong social bonds within their packs. Wolves are ritualistic. Wolves have excellent hearing, and under certain conditions can hear a howl as far as ten miles away.

Rituals are a series of acts regularly repeated in a set precise manner

Loyalty is faithfulness.

Faith is without question

Instinct is a largely inheritable and unalterable tendency of an organism to make a complex and specific response to environmental stimuli without involving reason



### COMMON NOTIONS:

Repetition is impossible but we understand it none-the-less.

If it were not for the poetic, the experimental would stand still, unable to do other than repeat the same dull round over again.

TRANSLATIONS:

The howling of wolves is a portion of eternity too great for the eye of man.

The howling of wolves is a portion of eternity too great for the eye of man.

We will not remember the words of our enemies, but the silence of our friends.

We will not remember the words of our enemies, but the sound of our friend.

## SOLIDARITY

Care.

A pink rose bush, withers for winter and dies. The ground opens up, a fiery pit of skeletons.

Freedom.

Under the grounding weight of comfort I sleep, surrounded, in trust, by the group.

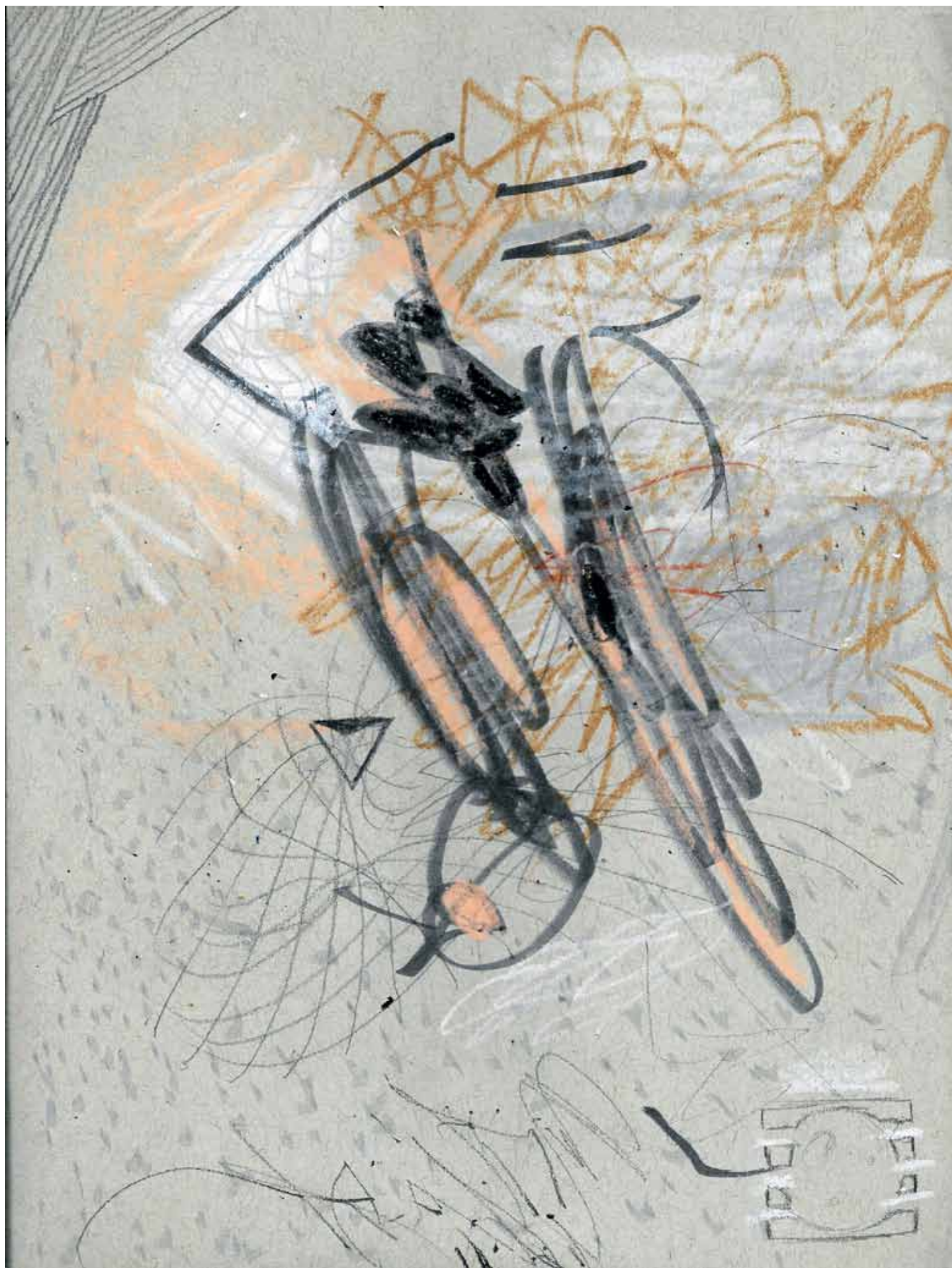
The “sounds of our friends”.

My right hand is hotter than my left.

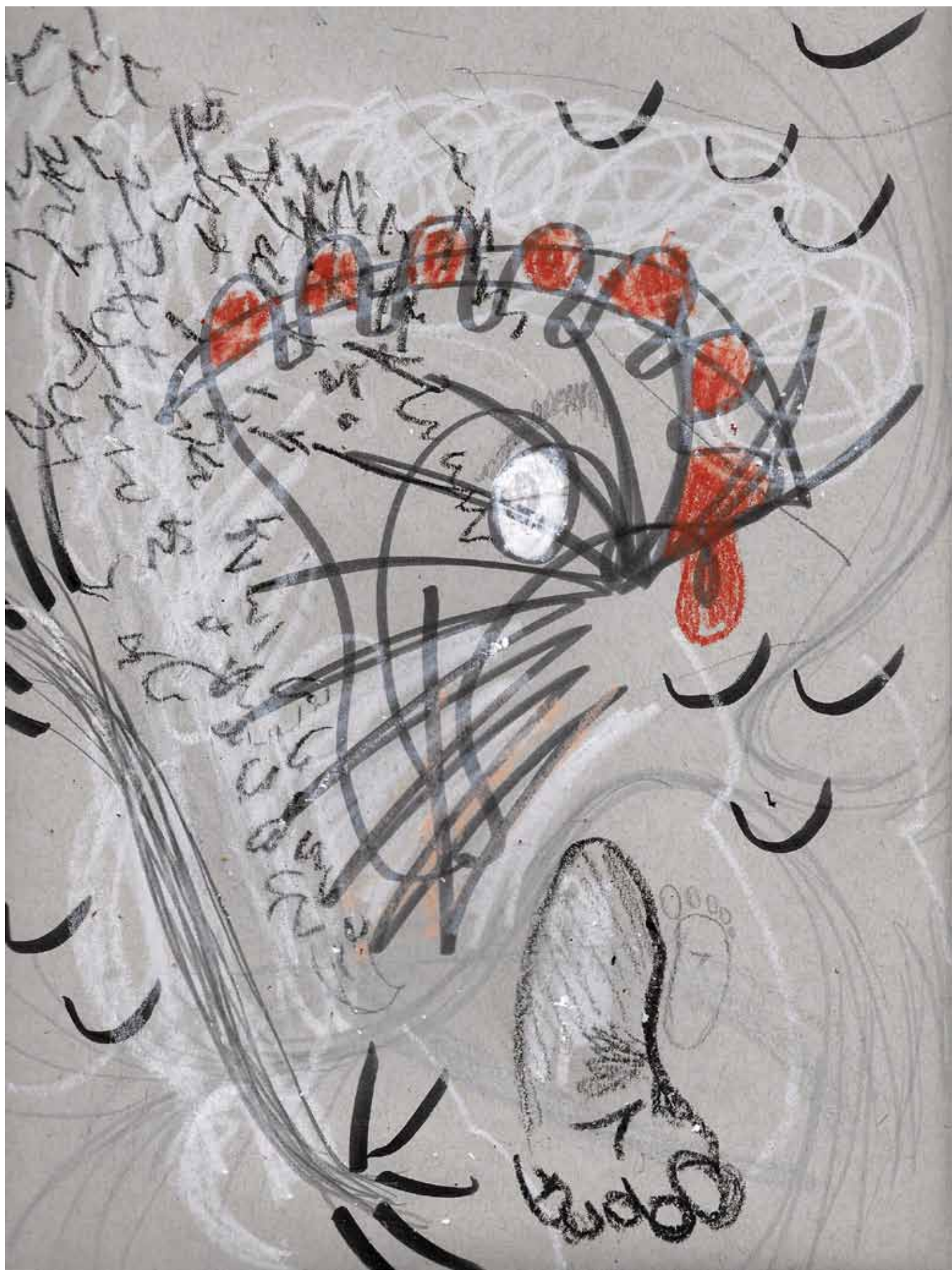
















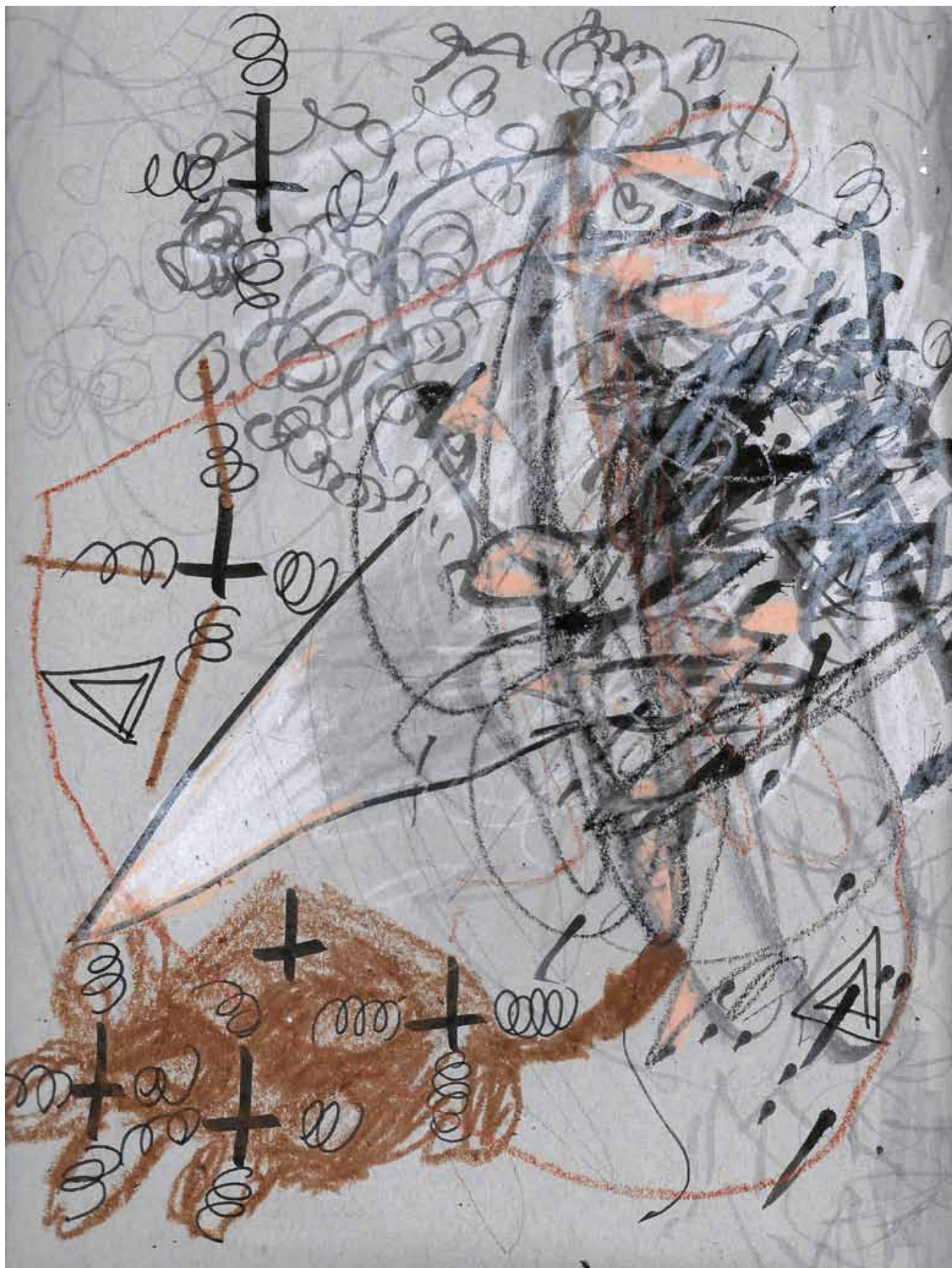












## CLOSING

A healthy Feminine is much like a WOLF: robust, strong life force, life-giving, territorially aware, inventive, loyal, roving. To adjoin to the instinctual nature does not mean to come undone. It means to establish territory, to find one's pack, to be in one's body with certainty and pride regardless of the body's gifts and limitations, to speak and act on one's behalf, to be aware, alert, and draw on the innate feminine powers of intuition and sensing, to come into one's cycles, to find what one belongs to, to rise with dignity, to retain as much consciousness as possible. - *Women Who Run with the Wolves: Myths and Stories of the Wild Woman Archetype*, by Clarissa Pinkola Estés

Video: 25 Wolves Howling for Two Minutes from the Wolf Conservation Center

PEACE

